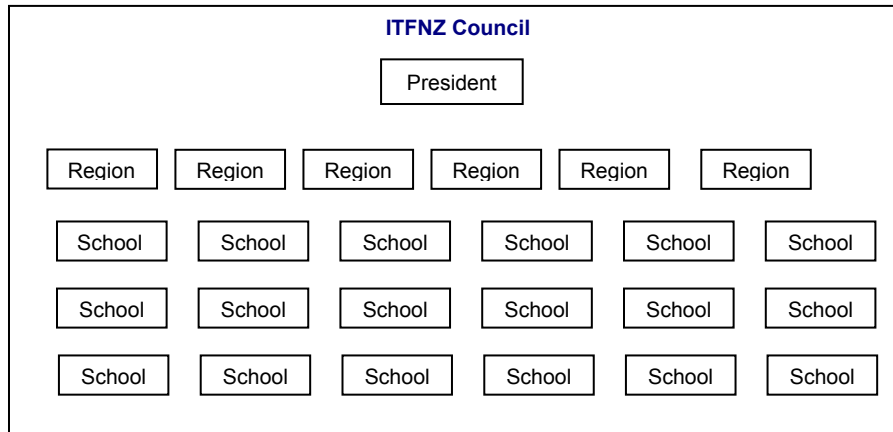


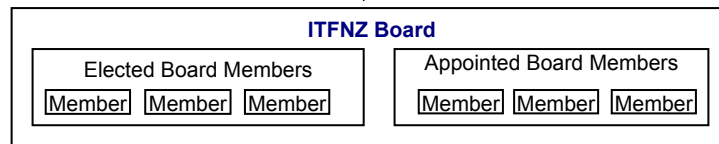
# ITFNZ



**ITFNZ**  
Taekwon-Do



- The Council is made up of all members of ITFNZ
- The Council controls the ITFNZ Board.
- The instructors represent their school or club and vote at council meetings



- The Board looks at governance of ITFNZ.
- They strategise. They set the budget.
- They give direction to the CEO
- The CEO controls the Committee Directors/Chairs each then looks after their own area of management

Patron

President

**ITFNZ Management**

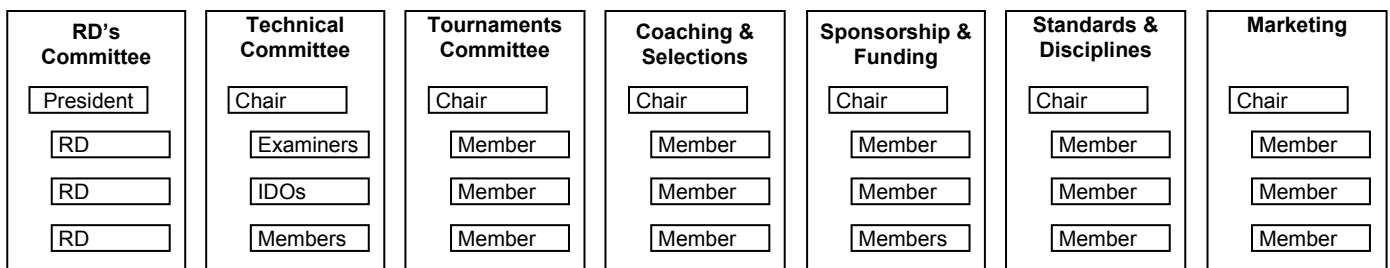
CEO

Secretary

CEO Support Staff

Treasurer

Database Administrator



- The committees carry on as they currently are under the guidance of the CEO.
- The Secretary, Treasurer and Database Administrator become support staff for the CEO (who effectively will be doing the jobs that the current Development Officer and some of the Secretary's tasks).
- The President and RD's form their own committee that focuses on the members looking at how best ITFNZ can serve its members.
- All committees report to the CEO who reports to the Board.
- The President is the voice of the members on Board and controls the ITFNZ Council as well as the RD's Committee.